

Safety Solutions

Safeguarding infeed points at printing and paper processing machines

Safety at Leuze



Simple. Safe. Productiv.

From risk assessment to validation: our safety solutions provide complete solutions for your systems. The innovative safety concepts of our expert teams ensure efficient material flow, gapless safety and high availability of your system. Even in applications where classic concepts are pushed to their limits. Always with legal certainty, CE certification and compliance with standards.

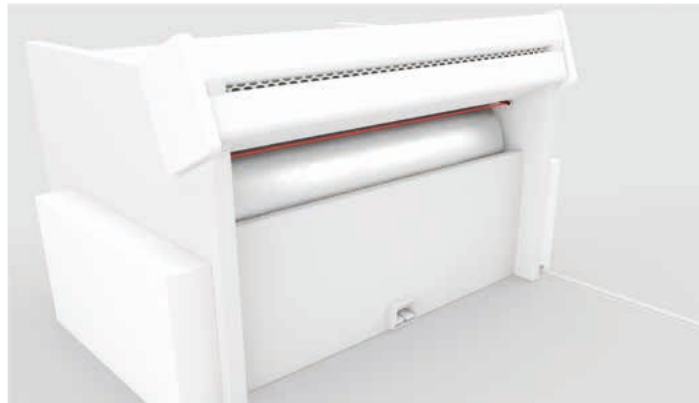
Printing machines - e.g. for offset printing - often consist of separate printing units for each color. For manual loading of the printing plates or blankets, the printing units arranged in rows are moved apart. The manual setup process take place directly at the infeed point of the rollers and requires maximum attention

from the operating personnel. Here, despite using the machine in inching mode, accidents due to injuries/crushes to fingers and hands occur time and again.

Our safety solution for additional protection of infeed points on printing machines is specially designed for these applications. It detects the fingers and hands of operators at the infeed points with little installation effort. This reduces the risk inherent in the principle and significantly increases the safety of the operating personnel.

Safeguarding infeed points at printing and paper processing machines

Anforderung: During setup operation, the printing plates and blankets must be inserted manually. Here, the rollers are controlled by the operator in inching mode - e.g. by a foot switch. In addition to the selected operating mode, the infeed point should be safeguarded against access by fingers / hands.



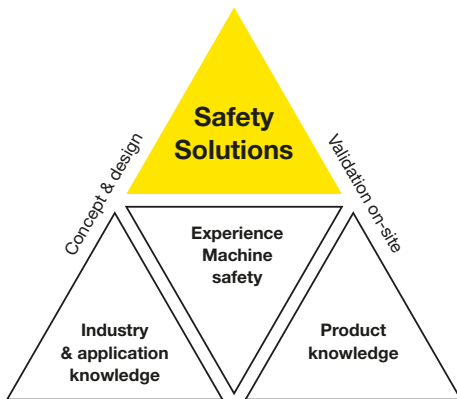
Lösung: A photoelectric sensor, which is connected to a safety system, is installed directly in front of the infeed point (point of hazard). If the sensor detects an approach of a finger or hand to the point of hazard, the dangerous movement is reliably stopped by the safety system. The original work process remains unchanged.

Advantages for you

- Save time and money with our pre-developed and process optimized safety solutions
- Safeguarding the infeed area of printing machines avoids hazards during insertion
- Seamless safety during the insertion process
- High reliability and availability
- Easy to retrofit

Working principle

The safety function is active during inching mode. The horizontal light beam of the photoelectric sensor is mounted in front of the hazard point of the rollers. The sensor is mounted in such a way that the setting and adjustment of the machine is possible, but a too strong approach of fingers or hands to the hazard point leads to the interruption of the light beam. Immediately after the light beam is interrupted, the safety system switches off the dangerous movement. As soon as the light beam is free again, the movement can be continued in inching mode.



Simple. Safe. Productiv.

System components and safety parameters

Sensor: Throughbeam photoelectric sensor series 3C

Evaluation unit: Safety relay MSI-TR1B

PL c in accordance with ISO 13849-1,
SILCL 1 in accordance with IEC 62061

2-channel safety output

Your partner for professional safety solutions

For more than 35 years, we have been supporting safety-related applications in different industries by offering a broad range of products. Our certified safety experts have extensive experience in designing safety concepts and comprehensive knowledge of the latest norms and standards.

In the projects, we accompany you from the risk assessment up to the safety-related acceptance. Our teams make sure that our solution meets your requirements and ensure that your project runs smoothly.

Complete solutions – Tailored to your needs

Our solutions are based on qualified safety concepts which, if necessary, can also be extended or created new. Every solution is individually tailored to your system layout and includes

- All necessary hardware and software components
- Engineering services, such as PLC programming and configuration according to project requirements
- Comprehensive, CE-compliant documentation
- Start-up support
- Validation of the safety function



Leuze electronic GmbH + Co. KG

In der Braike 1, 73277 Owen · T +49 7021 573-0 · F +49 7021 573-199 · info@leuze.com · www.leuze.com
en 02-2024/04 PDF version · Subject to modifications and errors