

Technical data sheet

Adapter set

Part no.: 50126081

CR50-Starterkit

Contents

- Technical data
- Dimensioned drawings
- Electrical connection
- Diagrams
- Notes
- Accessories



For illustration purposes only

RS232

Technical data

Basic data

Series	CR50
Contains	USB cable USB stick

Special version

Special version	Scan Engine Module
-----------------	--------------------

Characteristic parameters

--	--

Read data

Code types, readable	2/5 Interleaved Codabar Code 128 Code 39 Code 93 EAN 128 EAN 8/13 EAN/UPC GS1 Databar UPC
Scanning rate, typical	330 scans/s

Optical data

Reading distance	40 ... 250 mm
Light source	LED, Red
Wavelength	617 nm
Modulus size	0.1 ... 0.5 mm
Reading method	Line scanner
Beam deflection	Via prism
Light beam exit	Front

Electrical data

--	--

Performance data

Supply voltage U_B	4.5 ... 5.5 V, DC
Current consumption, max.	120 mA

Outputs

Number of digital switching outputs	1 Piece(s)
-------------------------------------	------------

Switching outputs

Voltage type	DC
--------------	----

Switching output 1

Switching element	Transistor, NPN
Function	DATA VALID

Interface

Type	RS 232, USB
------	-------------

RS 232

Function	Process
Transmission speed	300 ... 115,200 Bd
Data format	Fixed
Start bit	1
Data bit	8
Stop bit	1.2
Parity	None
Transmission protocol	Adjustable
Data encoding	ASCII

USB

Function	Process
----------	---------

Service interface

Type	USB
------	-----

USB

Function	Configuration via software
----------	----------------------------

Connection

Number of connections	1 Piece(s)
-----------------------	------------

Connection 1

Function	Data interface Service interface Signal IN Signal OUT Voltage supply
Type of connection	Terminal

Mechanical data

Design	Cubic
Dimension (W x H x L)	22.5 mm x 14 mm x 33 mm
Housing material	Plastic
Lens cover material	Plastic
Net weight	10 g
Type of fastening	Fastening thread

Operation and display

Type of display	Buzzer
Type of configuration	Software

Environmental data

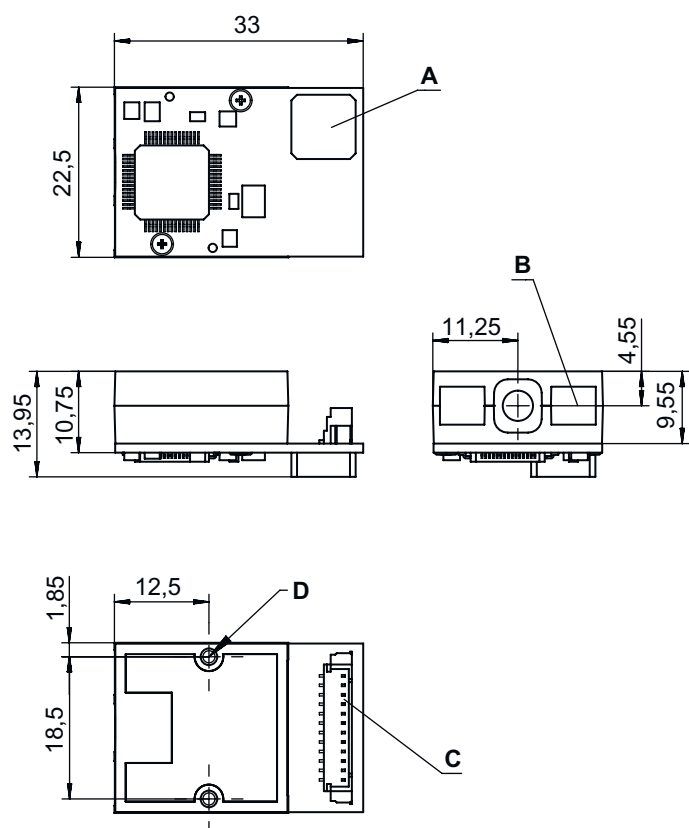
Ambient temperature, operation	0 ... 40 °C
Ambient temperature, storage	-20 ... 60 °C
Relative humidity (non-condensing)	5 ... 95 %
Extraneous light protection, max.	100,000 lx

Technical data

Customs tariff number	84719000
ECLASS 5.1.4	27279201
ECLASS 8.0	27440104
ECLASS 9.0	27280102
ECLASS 10.0	27440108
ECLASS 11.0	27280103
ECLASS 12.0	27280103
ECLASS 13.0	27280103
ECLASS 14.0	27280103 </td
ETIM 5.0	EC002550
ETIM 6.0	EC002550
ETIM 7.0	EC002550
ETIM 8.0	EC002999
ETIM 9.0	EC002999

Dimensioned drawings

All dimensions in millimeters



- A Acoustic signaler (buzzer)
- B LED scan line
- C Molex connector (53398-1271), 12-pin
- D Threaded inserts for installation M1.6x0.35/2.5 deep (2x)

Electrical connection

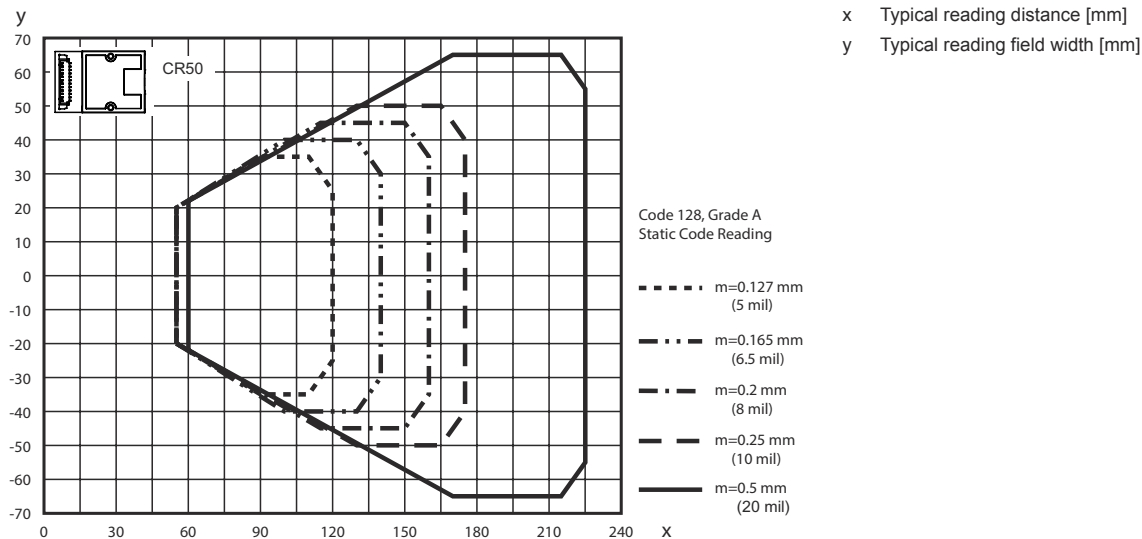
Connection 1

Function	Data interface
	Service interface
	Signal IN
	Signal OUT
	Voltage supply
Type of connection	Terminal
Type of terminal	Plug connector
No. of pins	12 -pin



Terminal	Assignment
1	+5 V DC
2	GND
3	Buzzer
4	LED
5	Trigger IN
6	RS 232 RxD
7	RS 232 TxD
8	RS 232 RTS
9	RS 232 CTS
10	n.c.
11	USB D+
12	USB D-


Diagrams

Reading field




Notes


 Observe intended use!	
	<ul style="list-style-type: none"> ↪ This product is not a safety sensor and is not intended as personnel protection. ↪ The product may only be put into operation by competent persons. ↪ Only use the product in accordance with its intended use.

Downloads	
	<p>USB drivers for configuring are available on the Internet at www.leuze.com.</p> <ul style="list-style-type: none"> ↪ Call up the Leuze home page: www.leuze.com ↪ Enter the type designation or part number of the device as the search term. ↪ The "LeAnalysisCollectionSetup" driver can be found on the product page for the device under the Downloads tab.

Accessories

Start-up/diagnosis

	Part no.	Designation	Article	Description
	50128204	MA-CR	Module	Description: Adapter circuit board for laboratory and test purposes Type of interface: RS 232

Note	
	<ul style="list-style-type: none"> ↪ A list with all available accessories can be found on the Leuze website in the Download tab of the article detailed page.