

Technical data sheet

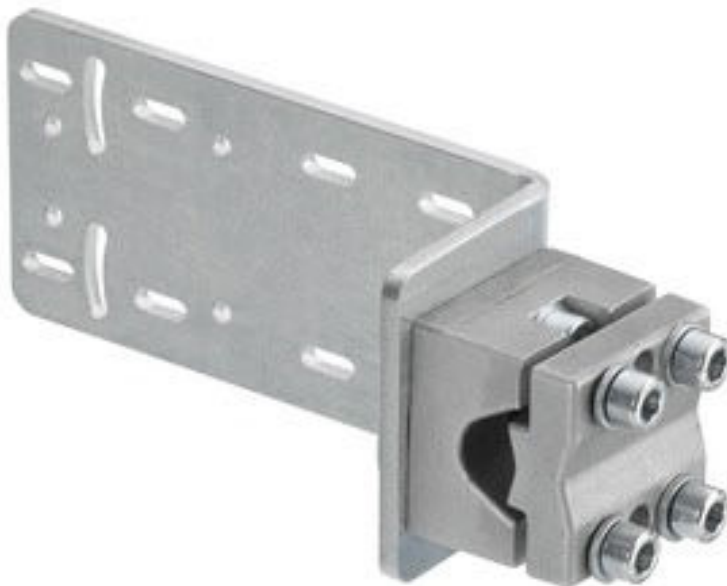
Mounting device

Part no.: 50144299

BTU 330M-1

Contents

- Technical data
- Dimensioned drawings



For illustration purposes only

Technical data

Basic data

Contains	8x lock washers
	8x M4 x 10 screws
	8x position washers
Suitable for product group	Stationary 2D-code readers
Suitable for	DCR 200i
	IL AL illumination
	IPS 200i
	IPS 400i

Mechanical data

Standard designation, metal mounting device	Diecast aluminum
	Steel, galvanized
Design of mounting device	Mounting system
Type of fastening, at system	For 10-16 mm rods
Type of fastening, at device	Screw type
Type of mounting device	Adjustable
	Turning, 360°
Mounting device material	Metal

Classification

Customs tariff number	39269097
ECLASS 5.1.4	27279202
ECLASS 8.0	27279202
ECLASS 9.0	27273701
ECLASS 10.0	27273701
ECLASS 11.0	27273701
ECLASS 12.0	27273701
ECLASS 13.0	27273701
ECLASS 14.0	27273701
ETIM 5.0	EC002498
ETIM 6.0	EC003015
ETIM 7.0	EC003015
ETIM 8.0	EC003015
ETIM 9.0	EC003015

Dimensioned drawings

All dimensions in millimeters

