

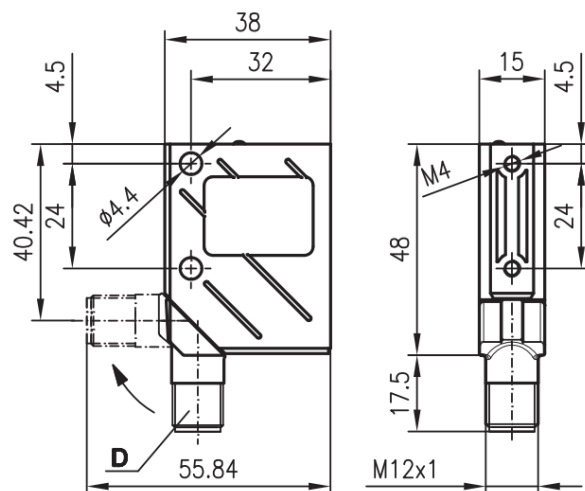
## Application Note

### SLS 8 Series Substitute

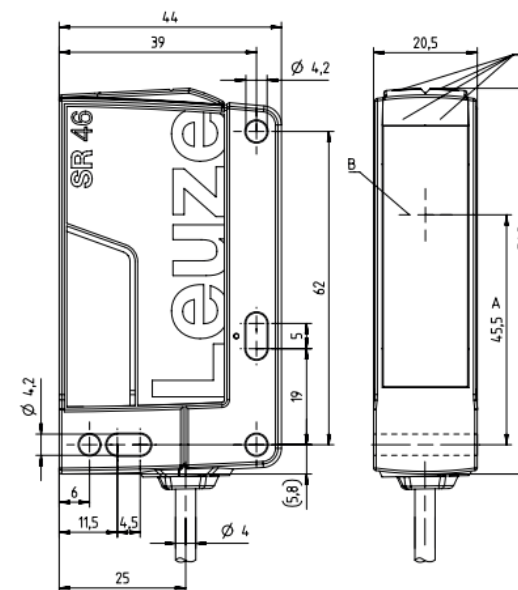
Replacement for SLS 8 in combination with a suitable test monitoring unit MSI-TR1B/ MSI-TR2B

! There is no direct 1:1 substitute

The SLS 46C series can be used as a replacement. The SLS46 C fulfills all functional requirements of the SLS 25B series. **Note the significantly larger dimensions of the SLS 46C** compared to the SLS 25B. Please check the available space in the target application.



**SLS 8**



**SLS 46C**

# Pin assignment

## Transmitter - pin assignment

Pin	Core Color	SLS 8	SLS 46C
1	Brown	Supply voltage (10V – 30V DC)	Supply voltage (19,2V – 28,8V DC)
2	White	NC	NC
3	Blue	GND	GND
4	Black	Active	Active
5	Green	NC	-

## Receiver - pin assignment

Pin	Core Color	SLS 8	SLS 46C
1	Brown	Supply voltage (10V – 30V DC)	Supply voltage (19,2V – 28,8V DC)
2	White	OUT (PNP dark switching, NPN light switching)	Diagnosis (PNP dark switching)
3	Blue	GND	GND
4	Black	OUT (PNP light switching, NPN dark switching)	OUT (PNP light switching)
5	Green	NC	-

# Optional replacements

Leuze

OLD



SLS 8 (PLc)



MSI-TR1B/ MSI-TR2B

Replacement



SLS 46 C (PLc)



MSI-TR1B/ MSI-TR2B

## Find the correct replacement

**Leuze**

Article number	Article	Devicetyp	Connection	Replacement SLS 46C
50038792	SLSER 8/66-S12	Receiver	M12 connector	SLE46C-40.K2/4P-M12 (50121917)
50038791	SLSSR 8.8-S12	Transmitter	M12 connector	SLS46C-40.K28-M12 (50121909)

# Did you know...

---

**Leuze**

...WE KEEP YOU SUPPLIED WORLDWIDE

## **On-Site service, repairs and device replacement service**

- FAST ASSISTANCE DURING START-UP
- FAST HELP WORLDWIDE
- IN THE CASE OF EMERGENCY WE ARE AVAILABLE AROUND THE CLOCK

For emergencies, the Leuze electronic On-Call Service is available to you around the clock at +49 7021 573 – 0.



**For further support  
please contact our  
service hotline**



Technical Hotline

+49 7021 573 -123

[Service.protect@leuze.com](mailto:Service.protect@leuze.com)

Leuze electronic GmbH + Co. KG

[www.leuze.com](http://www.leuze.com)

