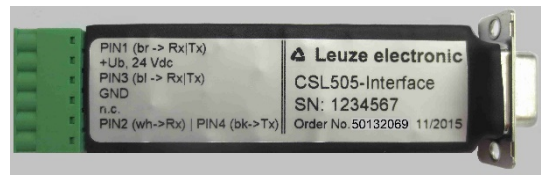


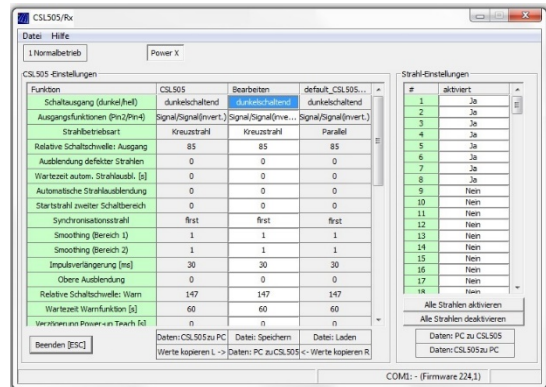
Mit CSL505-Interface (Art.-Nr.: 50132069) werden die schaltenden Lichtvorhänge CSL 505 konfiguriert.

Der Lieferumfang besteht aus:

- CSL505-Interface zur Verbindung mit dem seriellen Port eines PCs.
- D-SUB-Leitung, 9 polig Stecker/Buchse, 1:1
- Software zum Download unter [www.leuze.de](http://www.leuze.de)



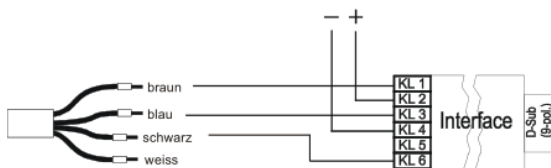
Je nach verwendeter Parameterliste bzw. Software können Parameterwerte andere Bezeichnungen tragen oder ausgeblendet sein.



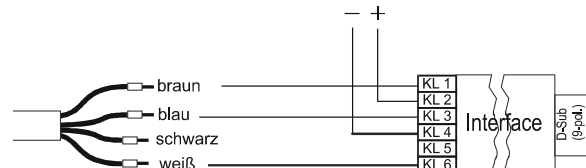
## Elektrischer Anschluss

### Anschlussleitung M8 (Leuze)

Sender

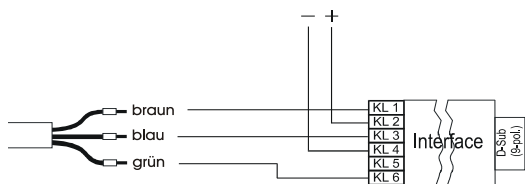


Empfänger

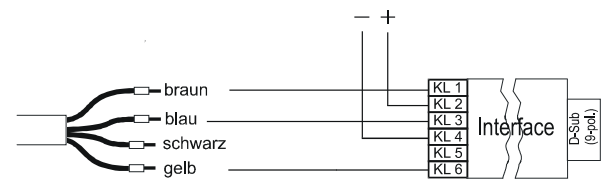


### Standardleitungen

Sender

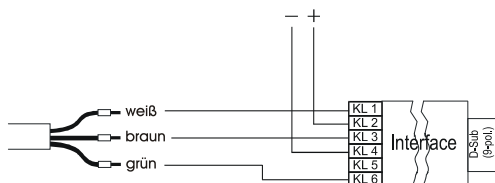


Empfänger

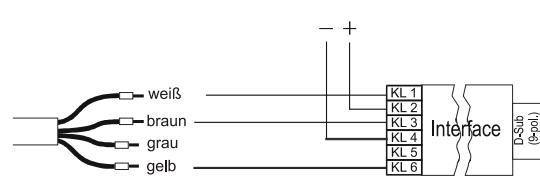


### PUR Leitung, AC: 000000H

Sender



Empfänger

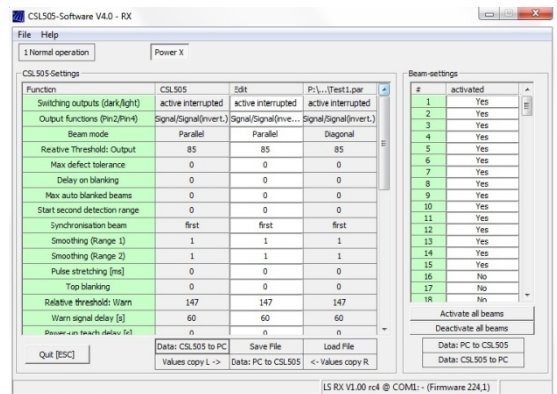


The CSL505-Interface (Part no.: 50132069) connects the switching light curtains CSL 505 directly to the serial port of PC.

The deliverables consist of:

- CSL505-Interface to connect with the serial port of PC.
- D-SUB-cable, 9 pin, plug/socket, 1:1
- Software-Download under [www.leuze.com](http://www.leuze.com)

Depending on the parameter list or the software, the name of parameters can change or the values are hidden.

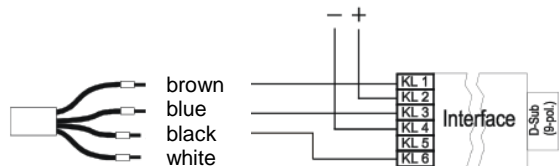


## Electrical Connection

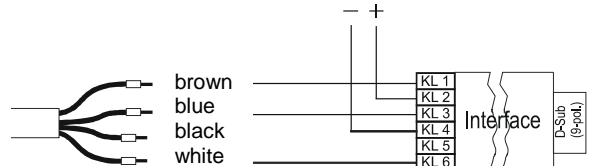
With minus switching outputs the receiver shall be connected to clamp 5.

### Connection M8

Transmitter

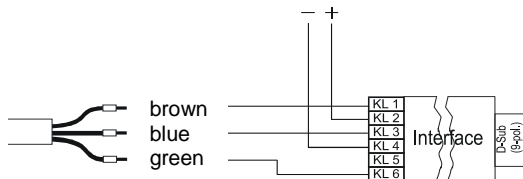


Receiver

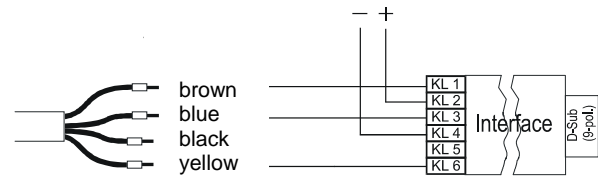


### Standard wire

Transmitter

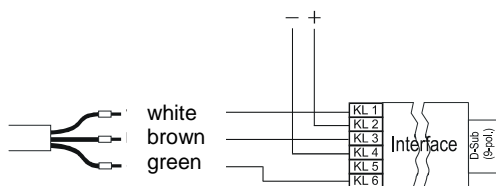


Receiver



### PUR wire, AC: 0000000H

Transmitter



Receiver

