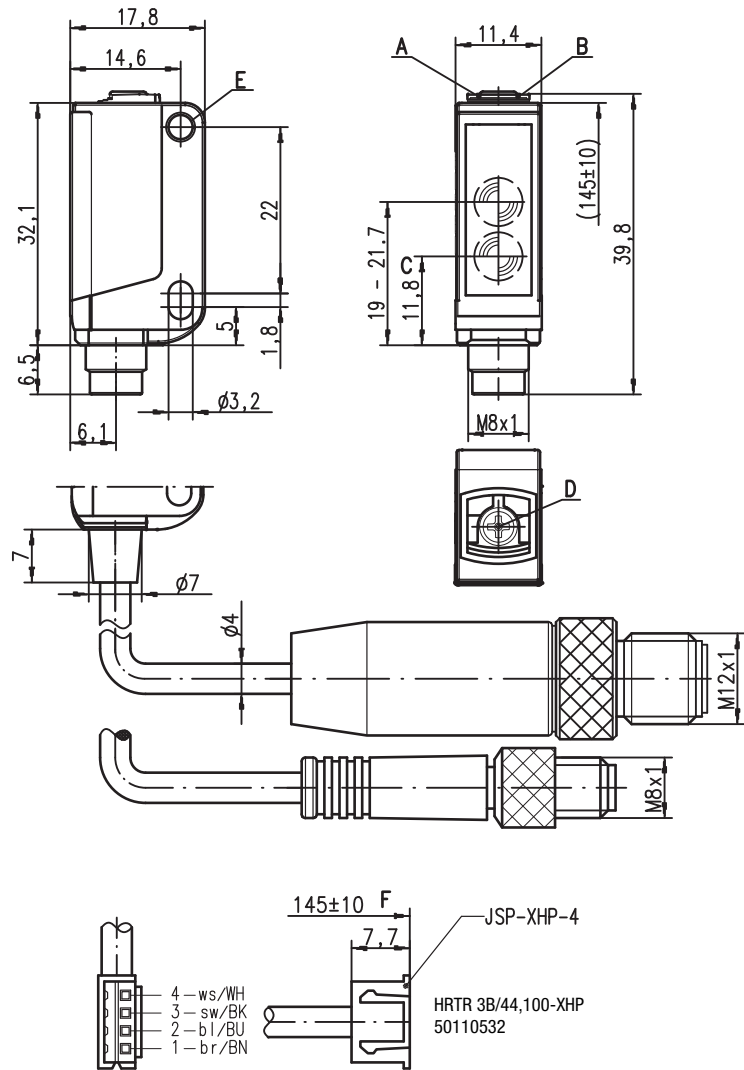


HRTR 3B Standard Diffuse reflection light scanner with background suppression

en 13-2013/03 50107304



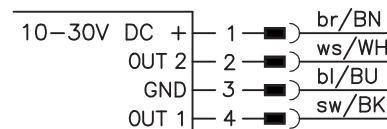
Dimensioned drawing



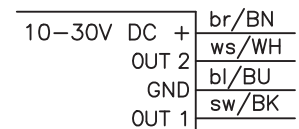
- A** Green indicator diode
- B** Yellow indicator diode
- C** Optical axis
- D** 8-turn potentiometer for scanning range adjustment
- E** Attachment sleeve
- F** Dimension, incl. device

Electrical connection

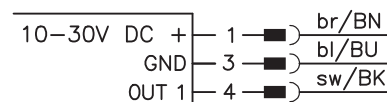
Plug connection, 4-pin



Cable, 4-wire



Plug connection, 3-pin



5 ... 400mm
200mm with
black-white error < 10%



- Diffuse reflection light scanner with visible red light and adjustable background suppression
- Exact scanning range adjustment through 8-turn potentiometer
- Very good black/white behavior and reliable switching nearly independent of the object or background properties
- Small and compact construction with robust plastic housing, protection class IP 67 for industrial application
- Fast alignment through *brightVision*®
- A²LS- Active Ambient Light Suppression
- Push-pull switching outputs
- High switching frequency for detection of fast events



Accessories:

(available separately)

- Mounting systems (BT 3...)
- Cable with M8 or M12 connector (K-D ...)

We reserve the right to make changes • DS_HRTR3B_Standard_en_50107304.fm

Specifications

Optical data

Typ. scanning range limit ¹⁾	5 ... 400mm
Scanning range ²⁾	see tables
Adjustment range ¹⁾	15 ... 400mm
Light beam characteristic	focussed at 200mm
Light source ³⁾	LED (modulated light)
Wavelength	620nm (visible red light)

Timing

Switching frequency	1,000Hz
Response time	0.5ms
Delay before start-up	≤ 300ms (acc. to. IEC 60947-5-2)

Electrical data

Operating voltage U_B ⁴⁾	10 ... 30VDC (incl. residual ripple)
Residual ripple	≤ 15% of U_B
Open-circuit current	≤ 15mA
Switching output	.../66 ⁵⁾ 2 push-pull switching outputs
	pin 2: PNP dark switching, NPN light switching
	pin 4: PNP light switching, NPN dark switching
	.../6 ⁵⁾ 1 push-pull switching output
	pin 4: PNP light switching, NPN dark switching
	.../6D ⁵⁾ 1 push-pull switching output
	pin 4: PNP dark switching, NPN light switching
	.../44 2 PNP switching outputs, complementary
	.../4 1 NPN switching output light switching, pin 2: not connected ⁶⁾
	.../22 2 NPN switching outputs, complementary
	light/dark switching
Function characteristics	≥ ($U_B - 2V$) / ≤ 2V
Signal voltage high/low	max. 100mA
Output current	adjustable via 8-turn potentiometer
Scanning range	

Indicators

Green LED	ready
Yellow LED	object detected - reflection

Mechanical data

Housing ⁷⁾	plastic (PC-ABS); 1 attachment sleeve, nickel-plated steel
Optics cover	plastic (PMMA)
Weight	with connector: 10g
	with 200mm cable and connector: 20g
	with 2m cable: 50g
Connection type	2m cable (cross section 4x0.20mm ²), connector M8 metal, 0.2m cable with connector M8 or M12

Environmental data

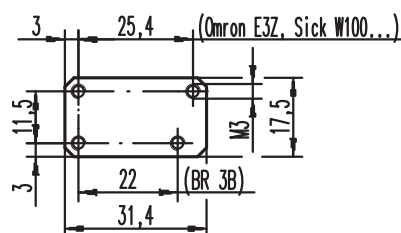
Ambient temp. (operation/storage)	-30°C ... +55°C / -30°C ... +70°C
Protective circuit ⁸⁾	2, 3
VDE safety class	III
Protection class	IP 67
Light source	free group (in accordance with EN 62471)
Standards applied	IEC 60947-5-2
Certifications	UL 508 ⁴⁾

- 1) Typ. scan. range limit/adjustment range: max. achievable scanning range/adjustment range for light objects (white 90%)
- 2) Scanning range: recommended scanning range for objects with different diffuse reflection
- 3) Average life expectancy 100,000h at an ambient temperature of 25°C
- 4) For UL applications: for use in class 2 circuits according to NEC only
- 5) The push-pull switching outputs must not be connected in parallel
- 6) Pin 2: unassigned, hence especially suitable for the connection to AS-interface I/O coupling modules
- 7) Patent Pending Publ. No. US 7,476,848 B2
- 8) 2=polarity reversal protection, 3=short-circuit protection for all transistor outputs

Remarks

Adapter plate:

BT 3.2 (part no. 50103844) for alternate mounting on 25.4 mm hole spacing (Omron E3Z, Sick W100...)



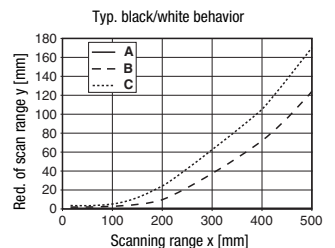
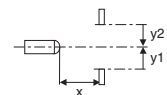
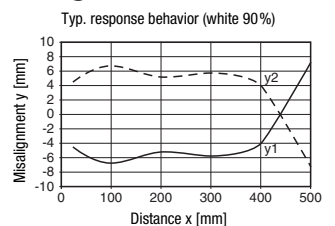
Tables

1	5	400
2	10	300
3	15	200

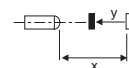
1	white 90%
2	grey 18%
3	black 6%

□ Scanning range [mm]

Diagrams



- A white 90%
- B grey 18%
- C black 6%



Remarks

Mounting system:



- ① = BT 3 (part no. 50060511)
- ②+③ = BT 3.1 ¹ (part no. 50105585)
- ①+②+③ = BT 3B (part no. 50105546)

1) Packaging unit: PU = 10 pcs.

HRTR 3B Standard Diffuse reflection light scanner with background suppression

Order guide

Selection table			Order code →																						
Equipment ↓			HRTR 3B/66 Part No. 50107228	HRTR 3B/66-S8 Part No. 50107229	HRTR 3B/66 200-S8 Part No. 50107230	HRTR 3B/66 200-S12 Part No. 50107298	HRTR 3B/66-80-S8 Part No. 50108876	HRTR 3B/6.01-S8 Part No. 50107231	HRTR 3B/44 Part No. 50107235	HRTR 3B/44-127, 5000 Part No. 50107234	HRTR 3B/44-S8 Part No. 50107233	HRTR 3B/44-65-S8 Part No. 50107237	HRTR 3B/44, 200-S12 Part No. 50107236	HRTR 3B/44, 5000 Part No. 50109753	HRTR 3B/22 Part No. 50107238	HRTR 3B/22-S8 Part No. 50107239	HRTR 3B/6-S8.3 Part No. 50108408	HRTR 3B/6D, 200-S8.3 on request	HRTR 3B/4, 200-S8.3 Part No. 50107232	HRTR 3B/44, 03, 200-S12 Part No. 50109486	HRTR 3B/44 100-XHP Part No. 50110532	HRTR 3B/44-95, 200-S8 Art.-Nr. 50112465			
Output 1 (OUT 1)	push-pull switching output	light switching	○	●	●	●	●	●																	
		dark switching	●																	●					
	PNP transistor output	light switching	○							●	●	●	●	●	●							●	●	●	●
		dark switching	●																						
	NPN transistor output	light switching	○														●	●							
		dark switching	●																						
Output 2 (OUT 2)	push-pull switching output	light switching	○	●	●	●	●																		
		dark switching	●																						
	PNP transistor output	light switching	○							●	●	●	●	●	●								●	●	●
		dark switching	●																						
	NPN transistor output	light switching	○														●	●							
		dark switching	●																						
Connection	cable 100 mm	4-wire																					● 1)		
	cable 2,000 mm	4-wire	●						●							●									
	cable 5,000 mm	4-wire								●															
	M8 connector, metal	3-pin																●							
	M8 connector, metal	4-pin		●			●				●	●					●								
	M8 connector, metal, snap-on	4-pin						●																	
	200 mm cable with M8 connector	3-pin																●	●						
	200 mm cable with M8 connector	4-pin			●																		●		
	200 mm cable with M12 connector	4-pin				●								●								●	2)		
	pin 2: not assigned, suitable for connecting to AS-i coupling module								●									●	●	●					
Configura- tion	freely adjustable via 8-turn potentiometer		●	●	●	●		●	●		●		●	●	●	●	●	●	●	●	●	●			
	preset to scanning range [mm]:						80			127		65											95		
Switching frequency	200Hz							●																	
	1,000Hz		●	●	●	●	●		●	●	●	●	●	●	●	●	●	●	●	●	●	●	●		

1) With XHP connector: dimensions including device 145 mm ± 10 mm

2) Connector without Ultra-Lock™ fast locking

Application notes



- **Approved purpose:**
This product may only be used by qualified personnel and must only be used for the approved purpose. This sensor is not a safety sensor and is not to be used for the protection of persons.
- For glossy surfaces (e.g. metals), the light beam should not be incident on the object surface at a right angle. A slight inclination is sufficient for preventing undesired direct reflections. This may result in a reduction in the scanning range.
- Objects should only be moved in laterally from the right or left. Moving in objects from the connector side or operating side is to be avoided.
- Outside of the scanning range, the sensor operates as an energetic diffuse reflection light scanner. Light objects can still be reliably detected up to the scanning range limit.
- The sensors are equipped with effective measures for the maximum avoidance of mutual interference should they be mounted opposite one another. Opposite mounting of multiple sensors of the same type should, however, absolutely be avoided.