



USB Virtual COM Port Driver Installation Guide For Windows 2000 only

Important Notes:

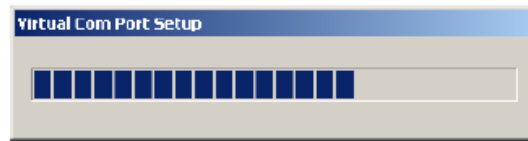
- Installation of this USB Virtual COM Port driver should be completed **before** connecting a bar code reader to your PC.
- These instructions support installation of the USB Virtual COM Port Driver on a computer using **Windows 2000** operating systems only. Verify the operating system on your personal computer (PC) now before performing installation.
- It is recommended you close all other applications currently running on your PC before performing installation steps for the USB Virtual COM Port driver.

Installing the Virtual COM Port Driver:

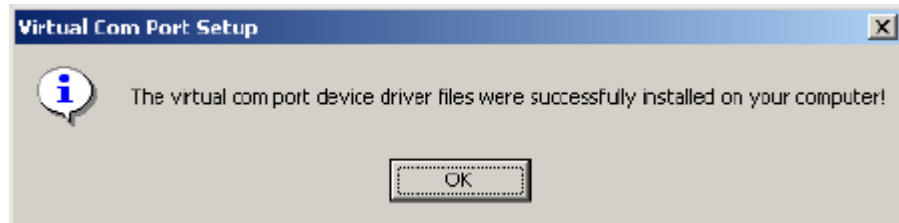
1. If the reader is currently connected to a USB port, then disconnect the reader from the USB port now.
2. Save "**Virtual_COM_2000.zip**" file to some path on your PC.
3. Double-click or Open the zipped file saved on your PC.
4. Extract the contents of the zipped file to the desired path on your PC.
5. Verify extraction was successfully completed by opening the path to where you extracted the files. Ensure the following files are listed:

```
ccserci.dll  
ccsermu.inf  
ccsermu.sys  
ccservp.inf  
setup.exe  
2000_VCPD_readme.pdf
```

6. Double-click on the 'setup.exe' file.
7. Virtual COM Port Setup progress bar window will appear indicating the installation process has been initiated and showing progress until completion.



8. Once installation is complete, the following message will appear:



9. Click 'OK'.

10. Connect the reader to your PC, using a USB cable.

11. Scan 'USB Virtual COM 1 Way Mode' (M668_01) code below:



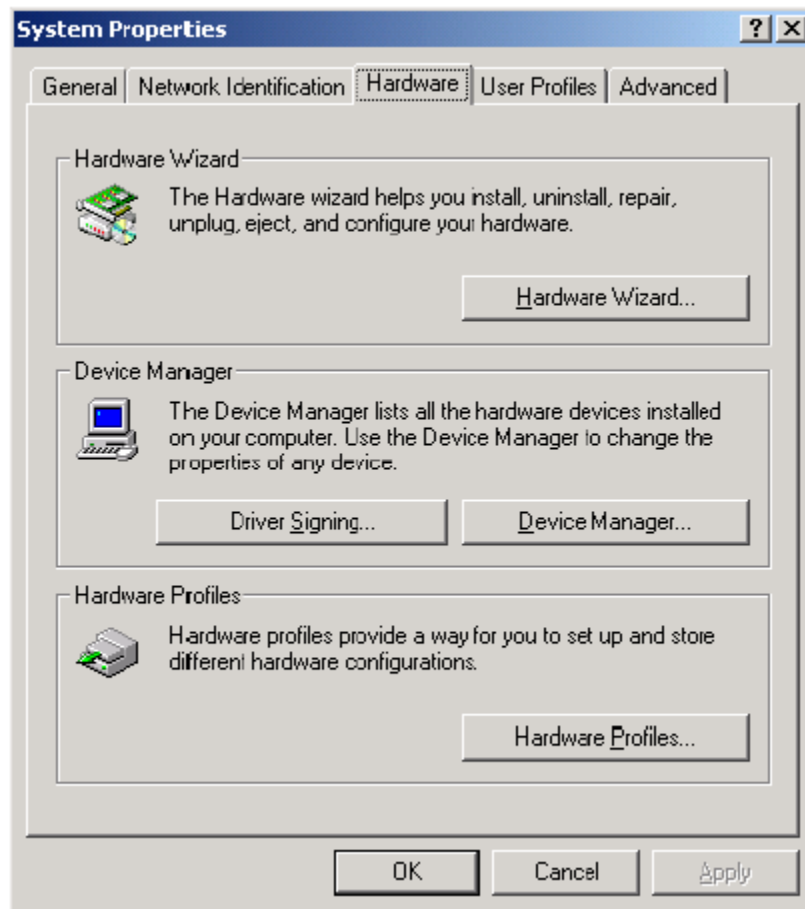
M668_01

USB Virtual COM 1 Way Mode

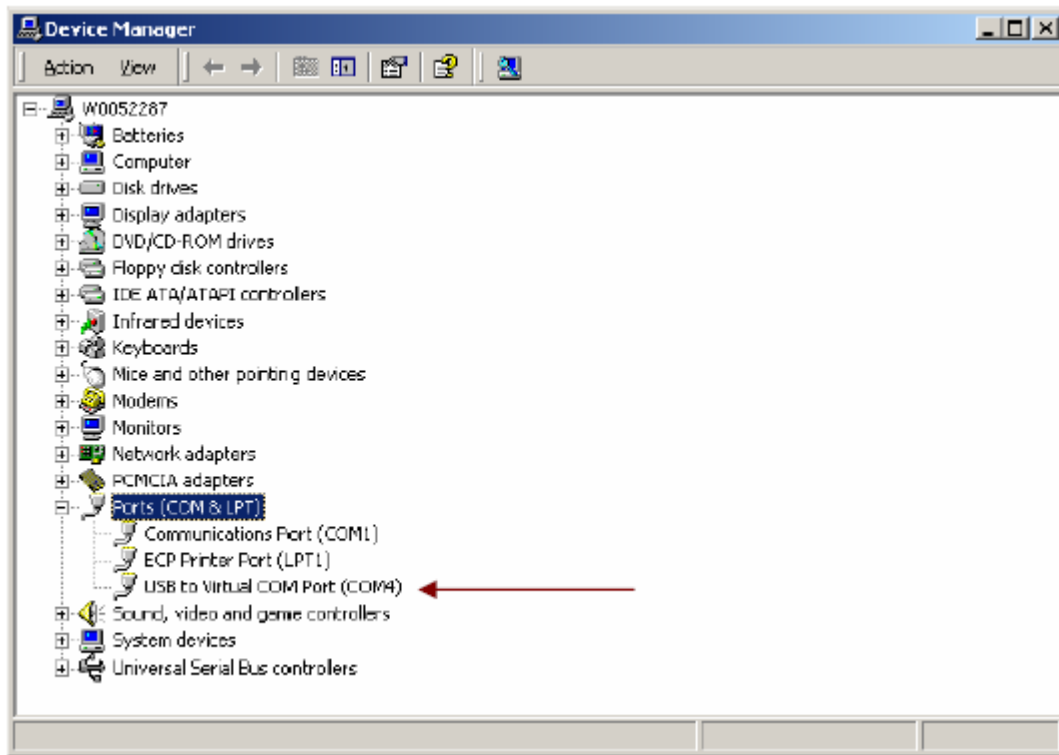
12. Re-boot your computer.

View or Modify assigned Virtual COM Port Driver (optional)

1. Click the 'Start' button located on your Windows taskbar.
2. Select 'Settings'
3. Select 'Control Panel'
4. Scroll down and double-click on 'System'
5. At the System Properties window, select the 'Hardware' tab



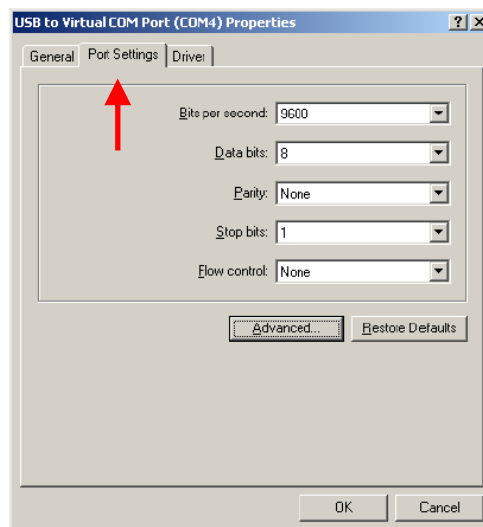
6. Under the 'Device Manager' section, Click 'Device Manager...'
7. Scroll down to 'Ports (COM & LPT)', double-click on this selection or click on the plus sign to expand the list of ports.



8. Listed is 'USB to Virtual COM Port', next to it you will see the (COM *n*) number it has been assigned. Make note of this COM port number.

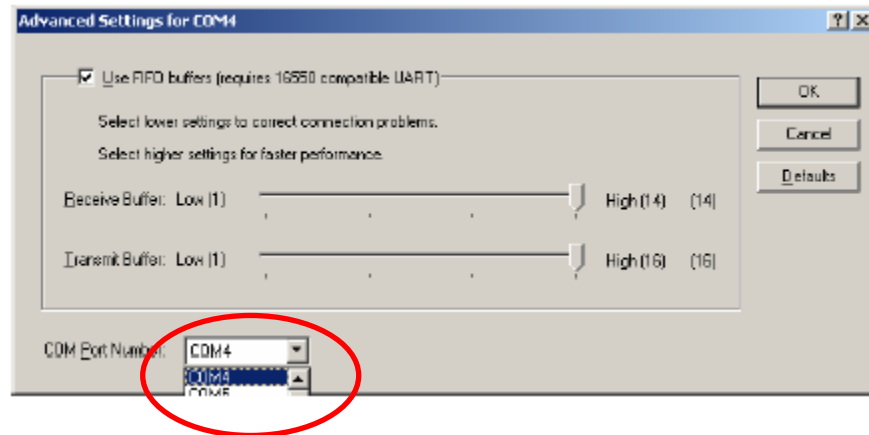
9. To change the port number assigned, right-click on 'USB to Virtual COM Port' and select 'Properties'.

10. At the USB to Virtual COM Port Properties window, select the 'Port Settings' tab.

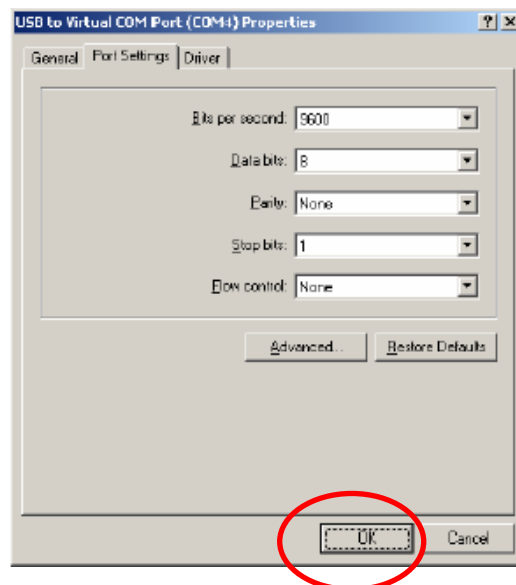


11. Click-on the 'Advanced..' button

12. Within the Advanced Settings for COM n window, located at the bottom is the 'COM Port Number:' field. Click on the drop down arrow located in this field and select the COM port number you would like to assign.



13. Click 'OK' to save changes.



14. Click 'OK' again

15. At the Device Manager window, scroll down to 'Ports (COM & LPT)' and verify port 'USB to Virtual COM Port' lists the newly assigned COM number.